

Appendix A

FIGURES

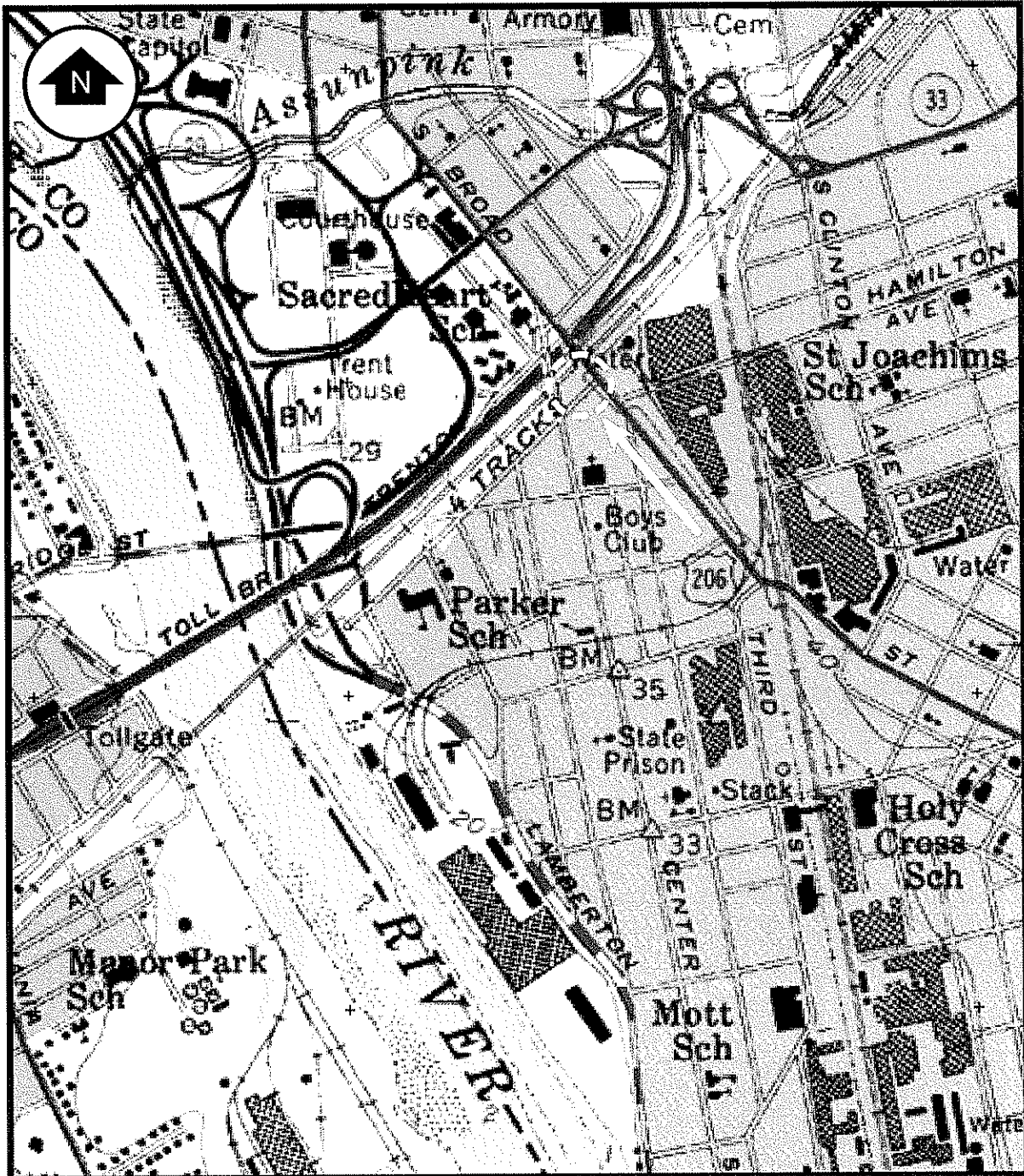


Figure A.1. Location of the Eagle Tavern Property (circled). Source: USGS 7.5" Topographic Series, Trenton West N.J.-PA Quadrangle (1955 [Photorevised 1981]), Scale: 1 inch= 925 feet (approximately).

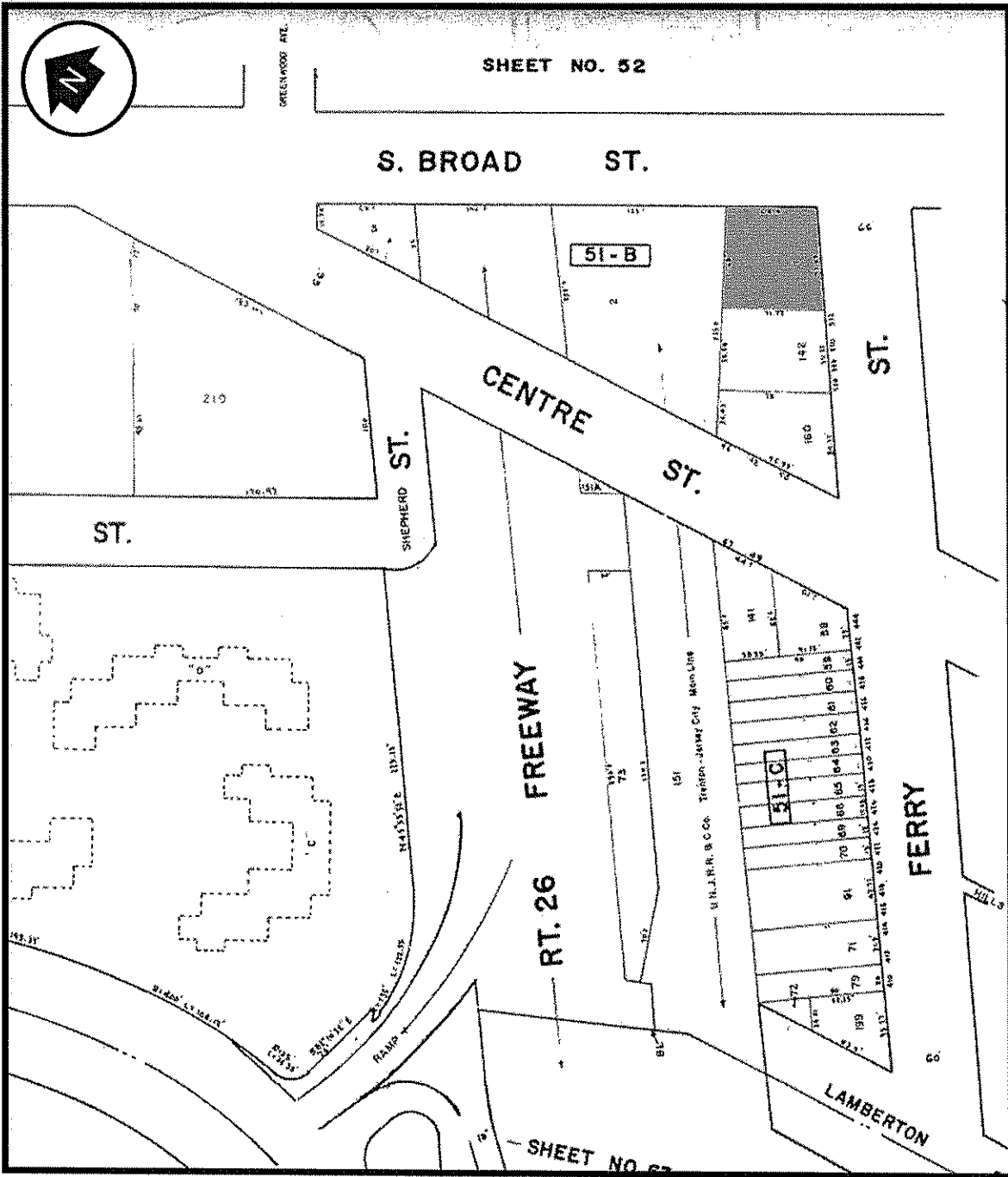


Figure A.2. Location of Eagle Tavern Tax Parcel, Block 51B, Lot 1. Eagle Tavern property shaded. Scale: 1 inch= 130 feet (approximately).

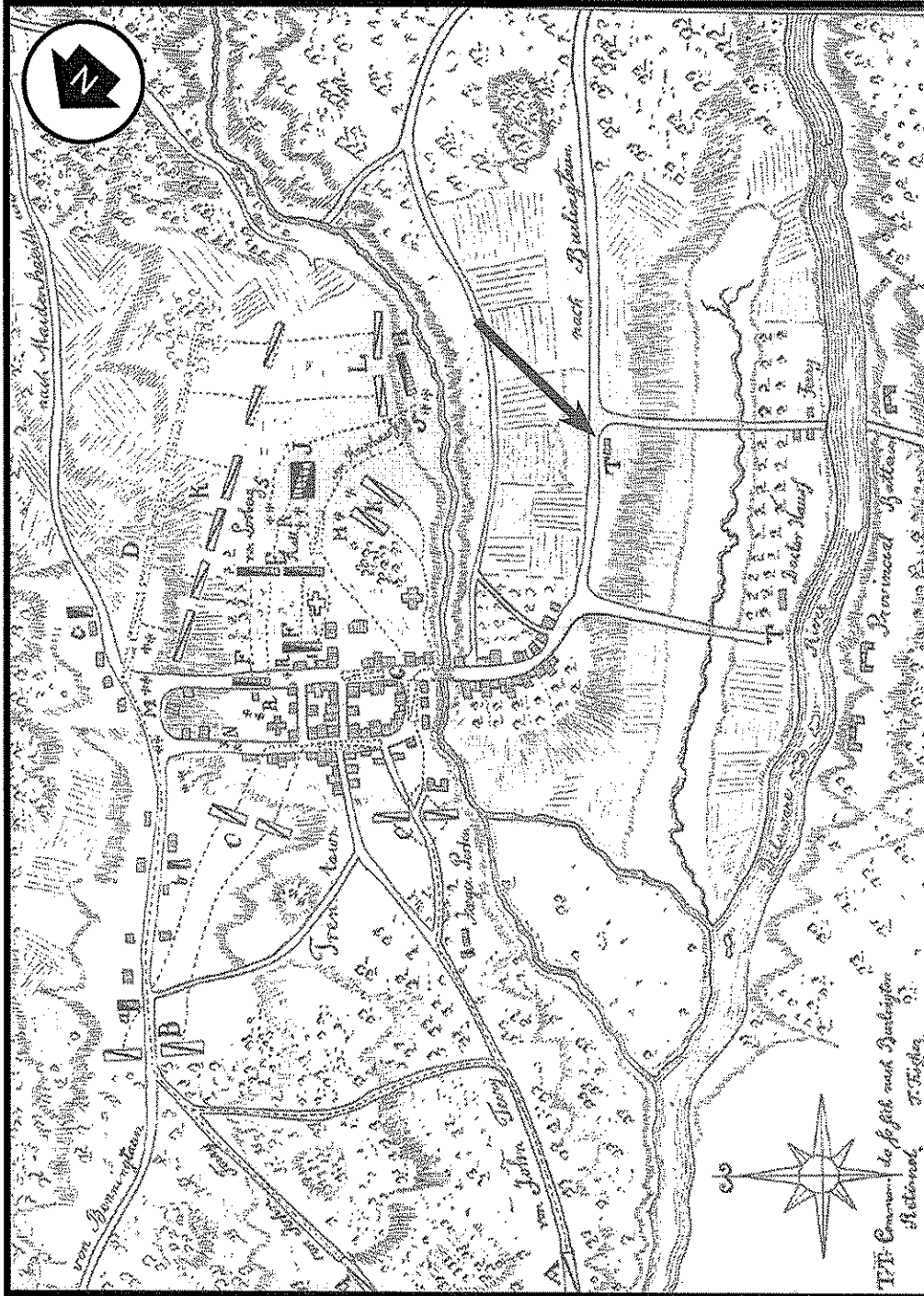


Figure A.3. Lieutenant Fischer's Map of Trenton. 1776. (Reproduced in Stryker 1898). Scale: 1 inch: 1200 feet (approximately). Location of Eagle Tavern property (then occupied by a dwelling owned by the Wain family) indicated with arrow. The annotation "T" is referenced as "Commands which retreated to Burlington," perhaps implying that the dwelling on the Eagle Tavern property was occupied by British or Hessian officers.

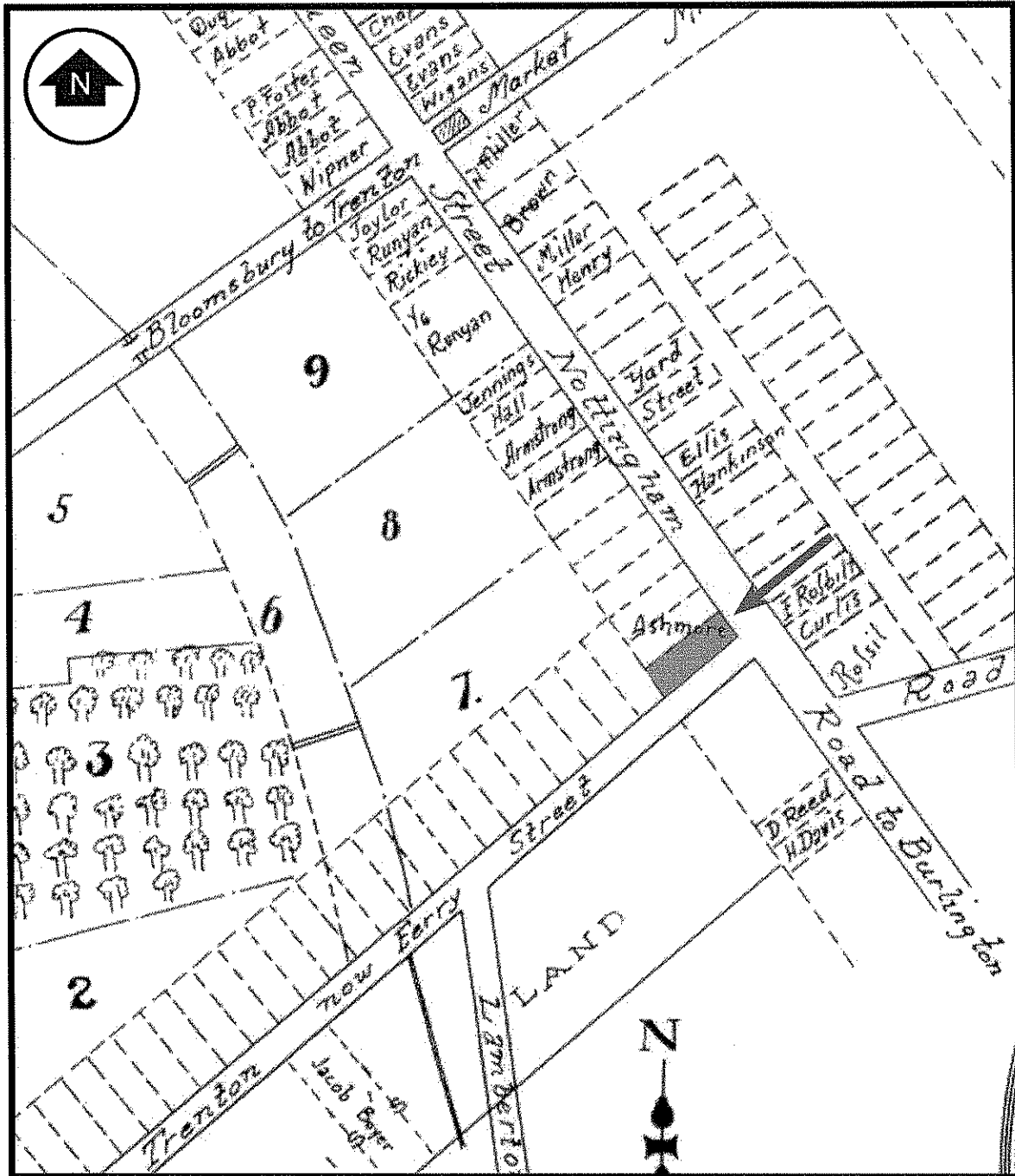


Figure A.4. A Plan and Survey of Sundry Pieces of Land Adjoining the Delaware River and Assunpink Creek Belonging to Jn. Cox. 1789. Scale: 1 inch= 315 feet (approximately). Location of the Eagle Tavern property (then larger than the current tavern lot and occupied by a dwelling owned by the Wain family) shaded.

THE EAGLE TAVERN PROPERTY: HISTORICAL ACCOUNT & ARCHAEOLOGICAL ANALYSIS

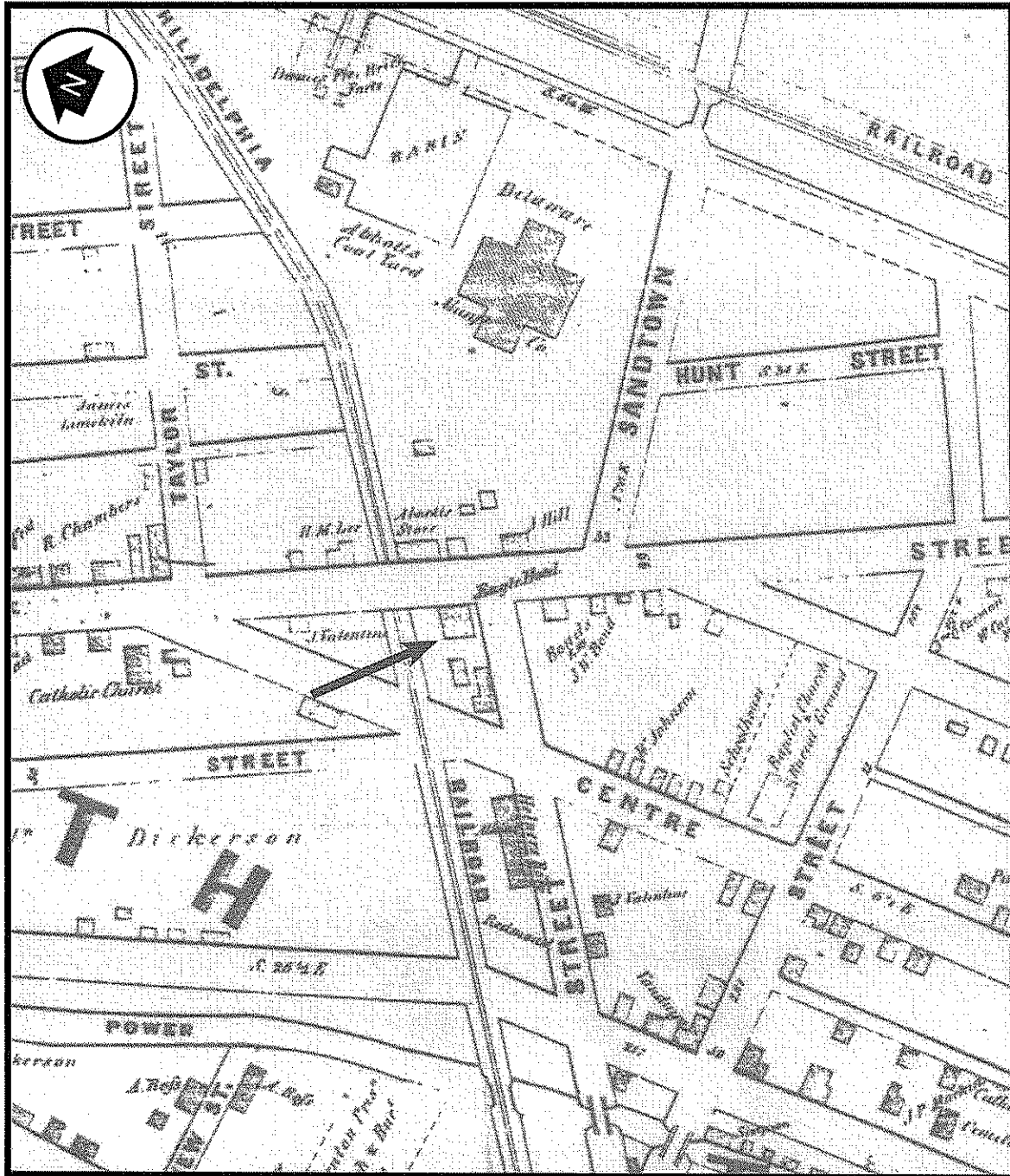


Figure A.5. Sidney, J. *Map of the City of Trenton*. 1849. Scale: 1 inch= 330 feet (approximately). Location of Eagle Hotel indicated with arrow.

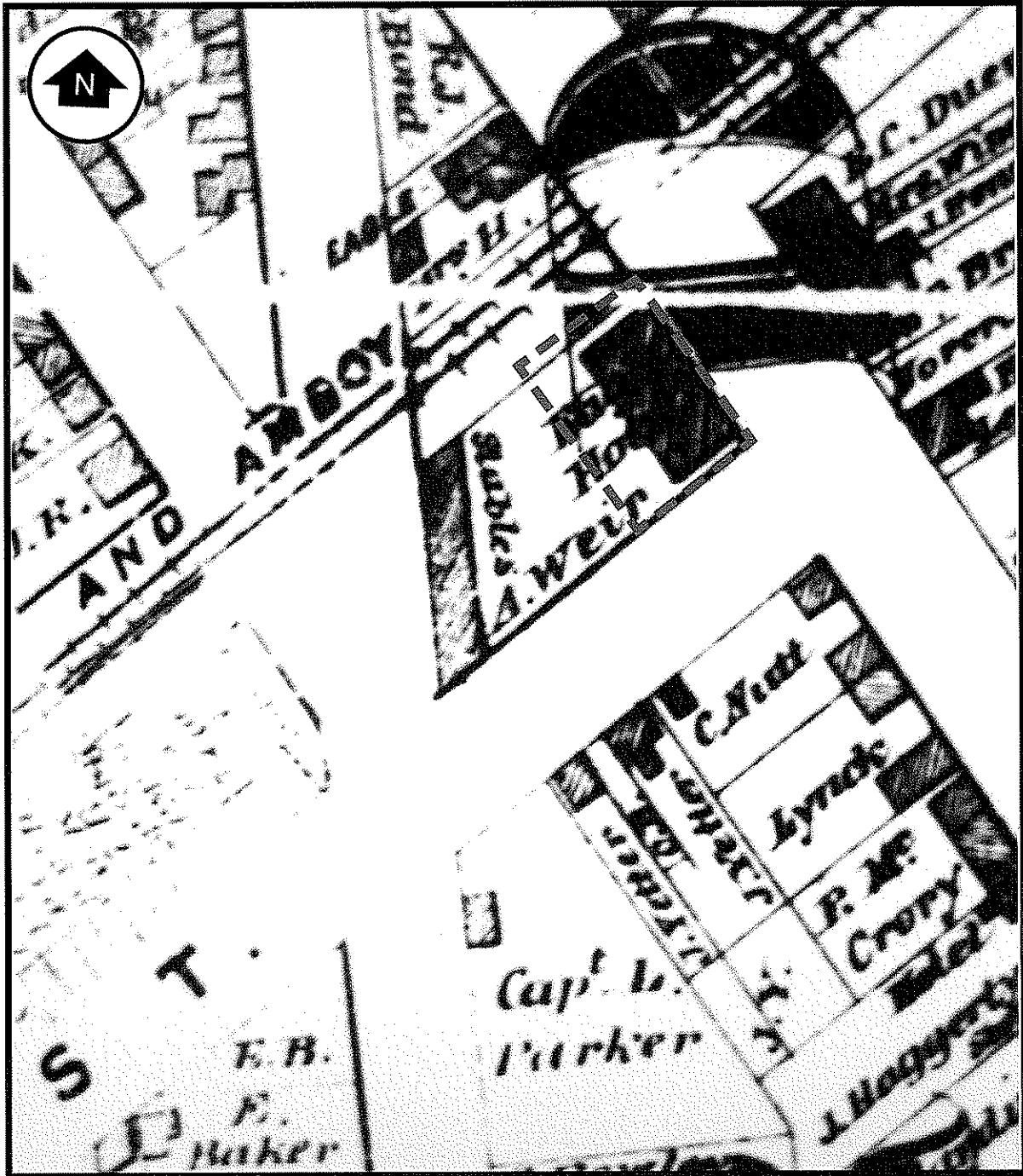


Figure A.6. Beers, F.W. *Map of the City of Trenton*. 1870. Scale: 1 inch= 120 feet (approximately). Location of present-day Eagle Tavern lot outlined.

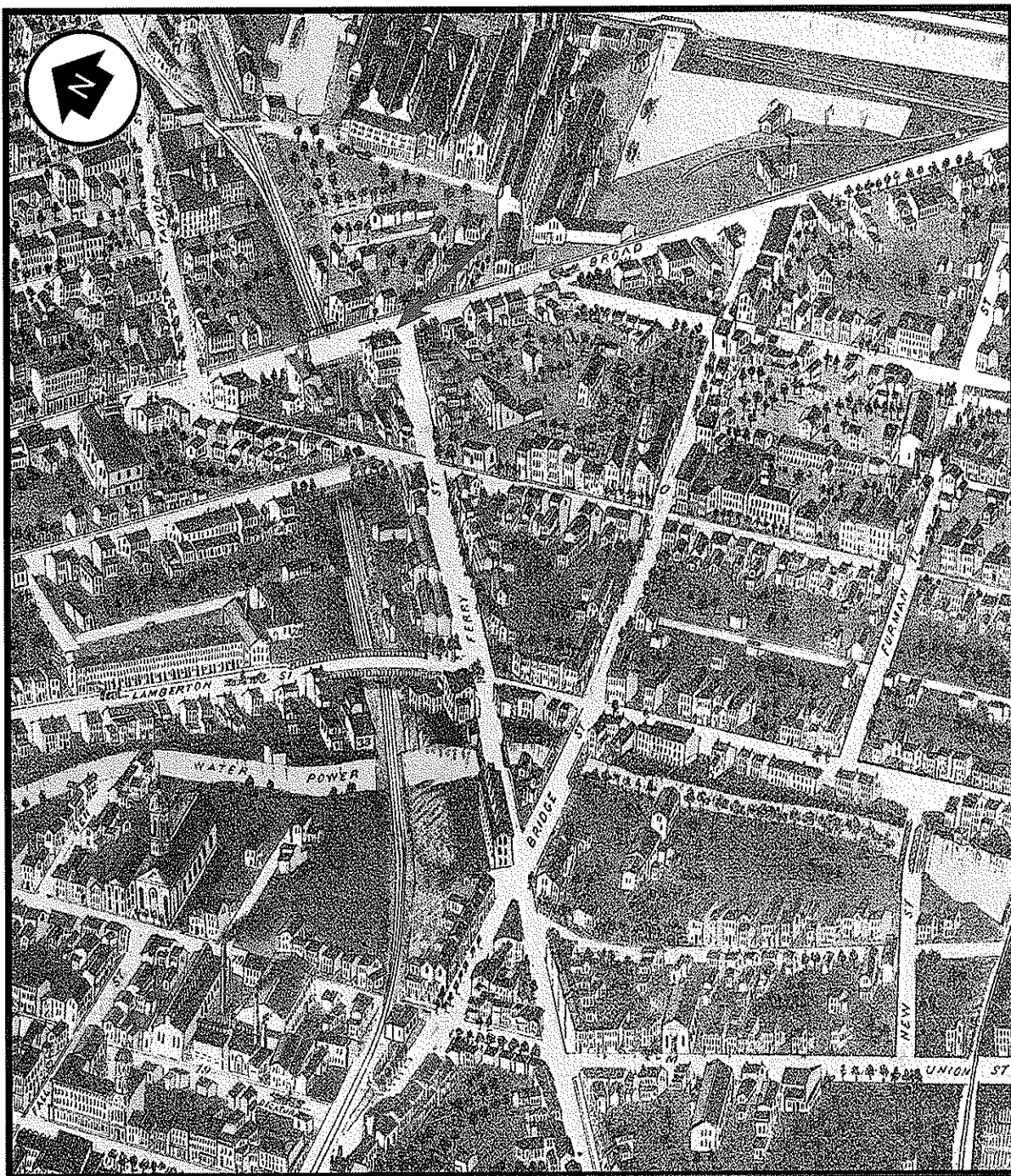


Figure A.7. Fowler and Bailey. *Bird's Eye View of Trenton*. 1874. Location of Eagle Tavern indicated with arrow.

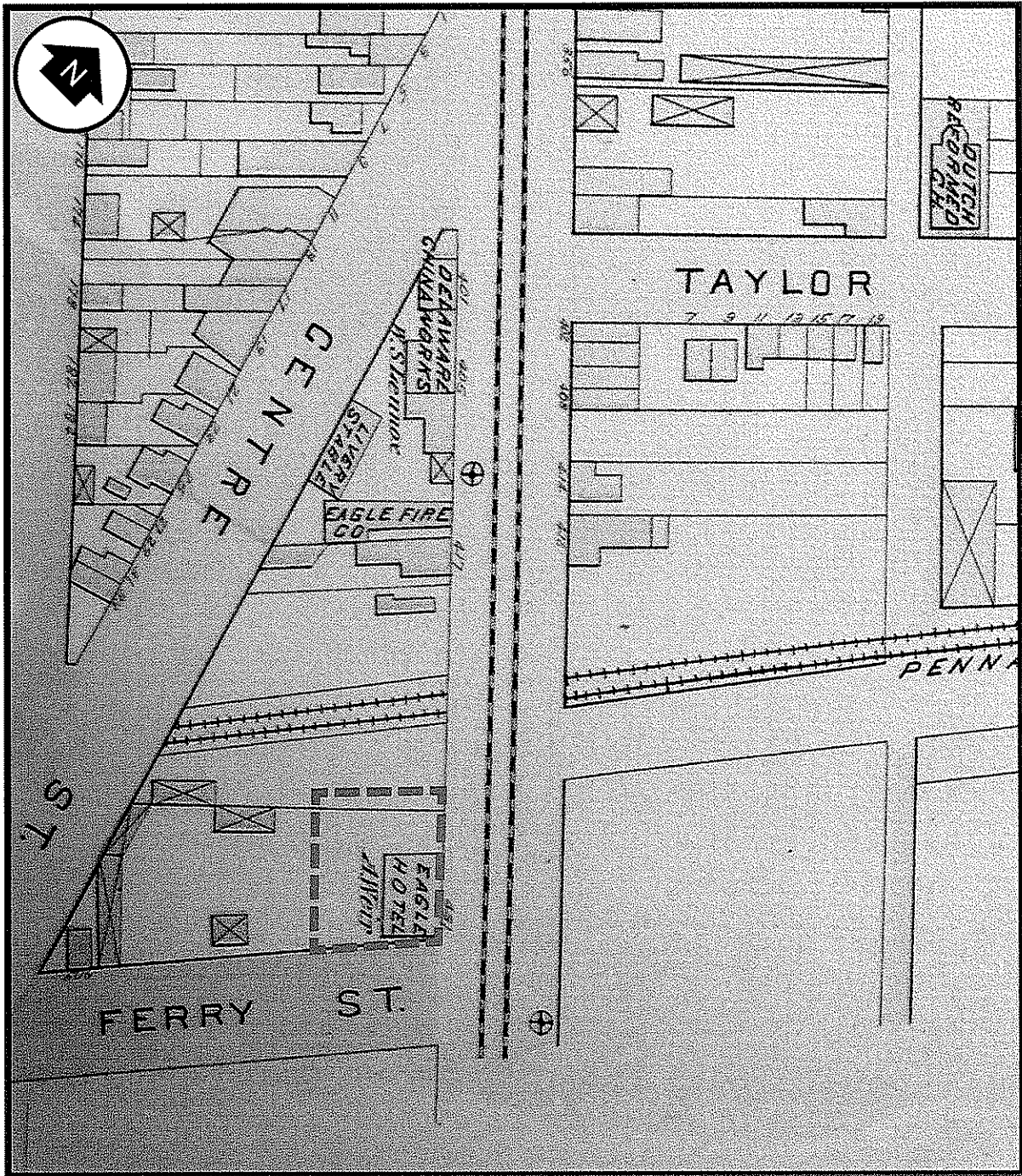


Figure A.8. Robinson, E. and R.H. Pidgeon. *Atlas of the City of Trenton*. 1881. Scale: 1 inch= 110 feet (approximately). Location of present-day Eagle Tavern lot outlined.

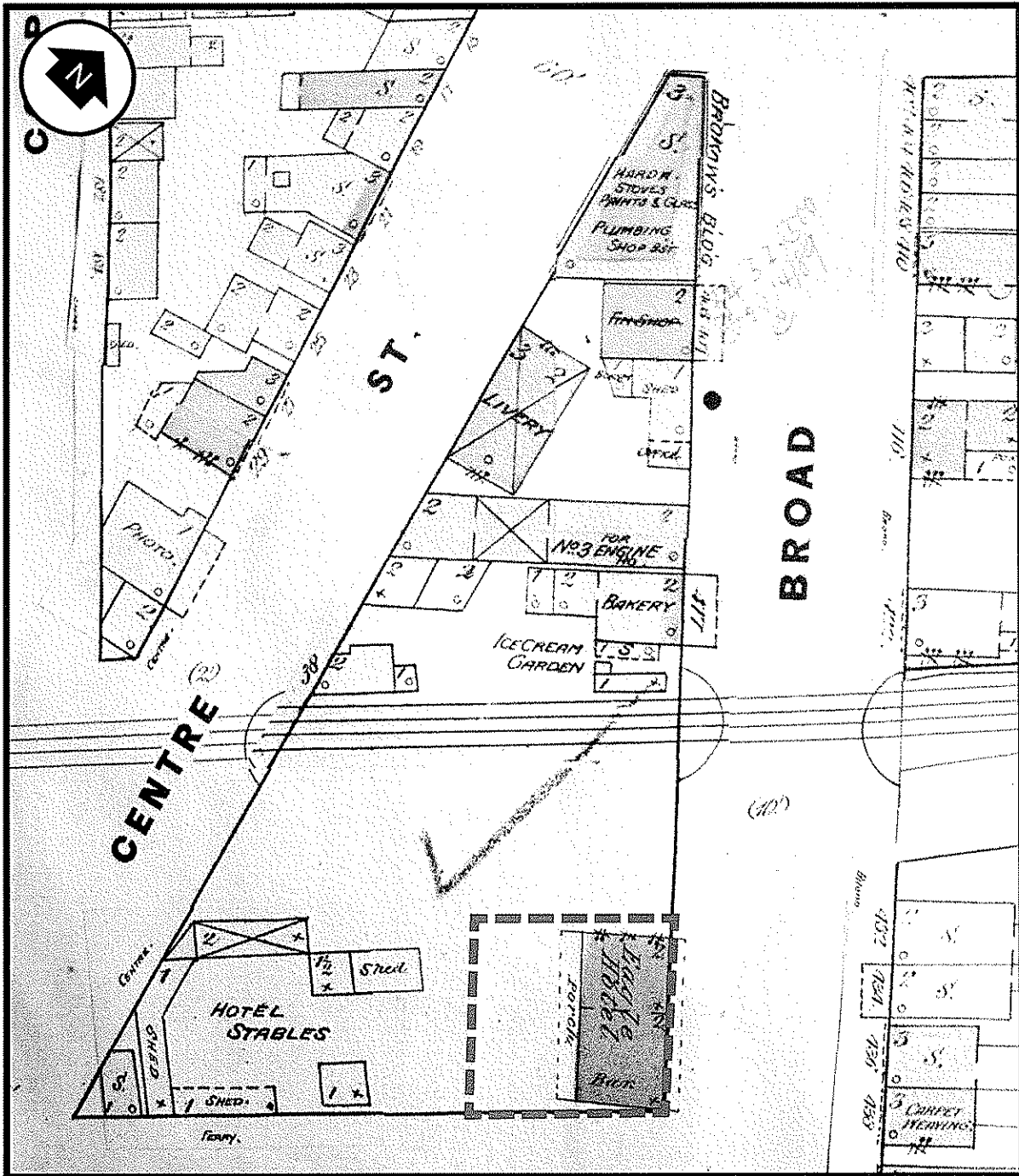


Figure A.9. Sanborn, D.A. *Insurance Map of Trenton*. 1874, corrected to 1886. Scale: 1 inch= 80 feet (approximately). Location of present-day Eagle Tavern lot outlined.

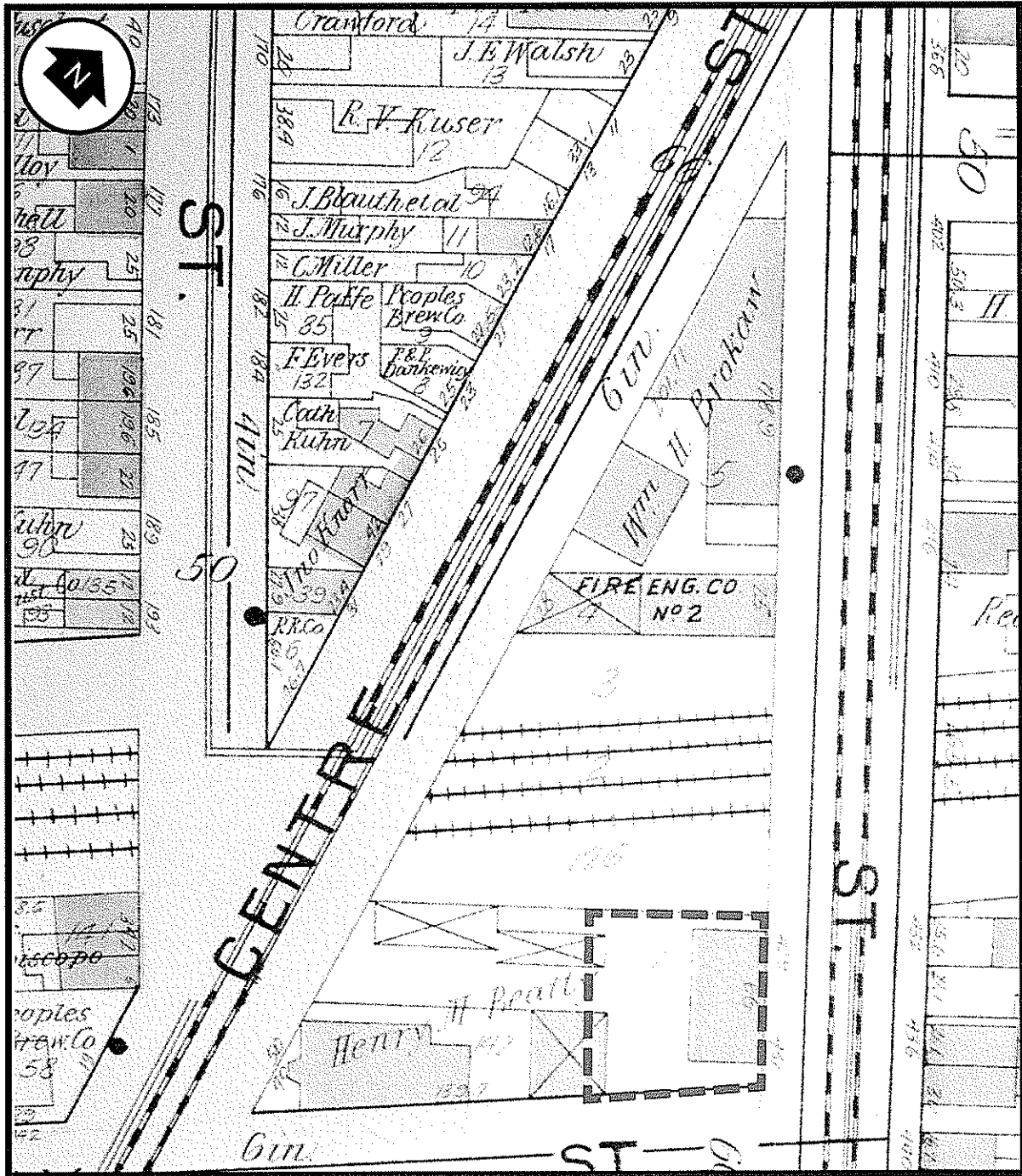


Figure A.10. Lathrop, J.M. Atlas of the City of Trenton. 1905. Scale: 1 inch= 85 feet (approximately). Location of present-day Eagle Tavern lot outlined.

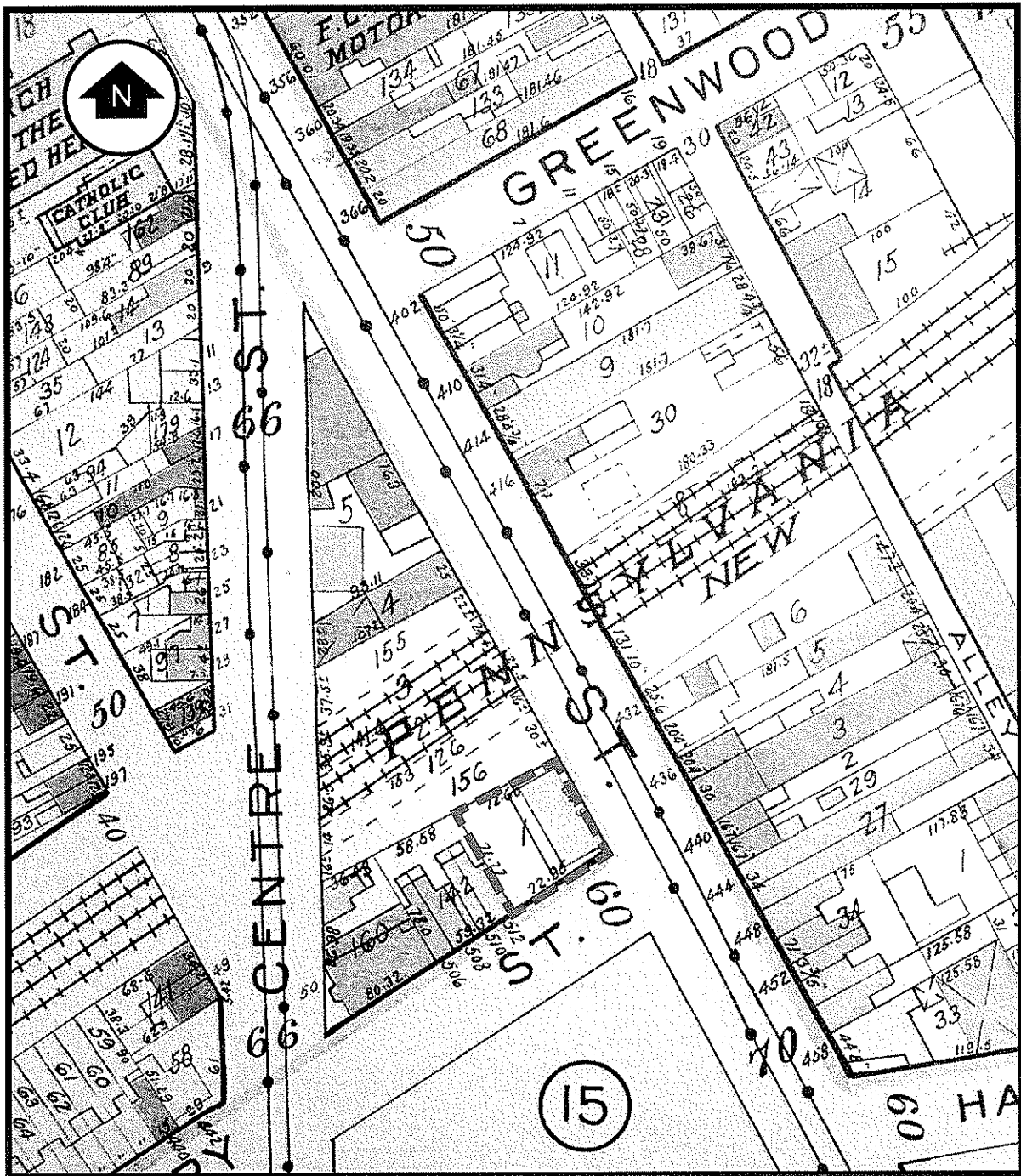


Figure A.11. Franklin Survey Company. *Real Estate Plat-Book of the City of Trenton*. 1930. Scale: 1 inch=125 feet (approximately). Location of Eagle Tavern lot outlined.

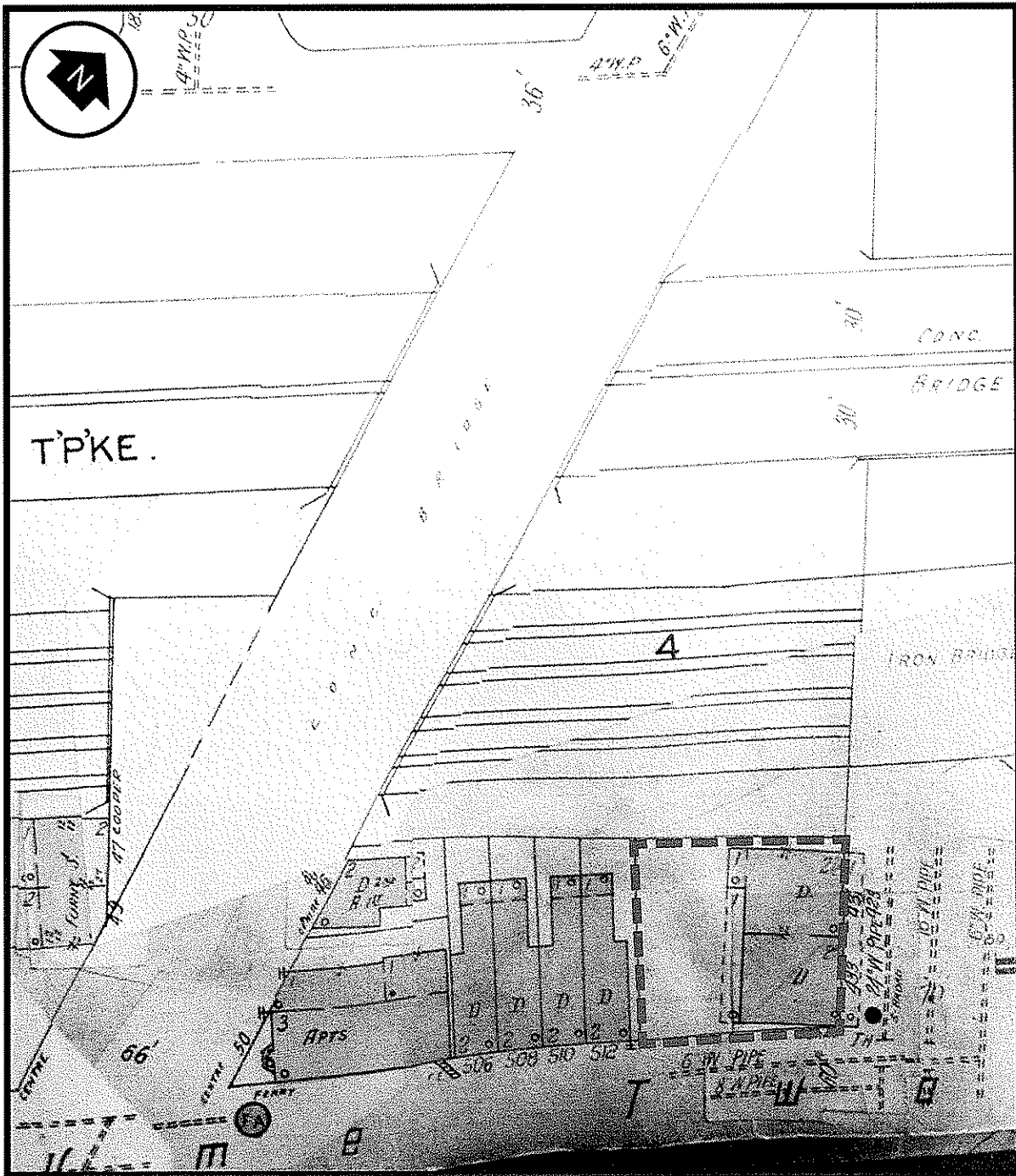


Figure A.12. Sanborn Map Company. *Insurance Map of Trenton*. 1927, revised to 1955. Scale: 1 inch= 75 feet (approximately). Location of Eagle Tavern lot outlined.

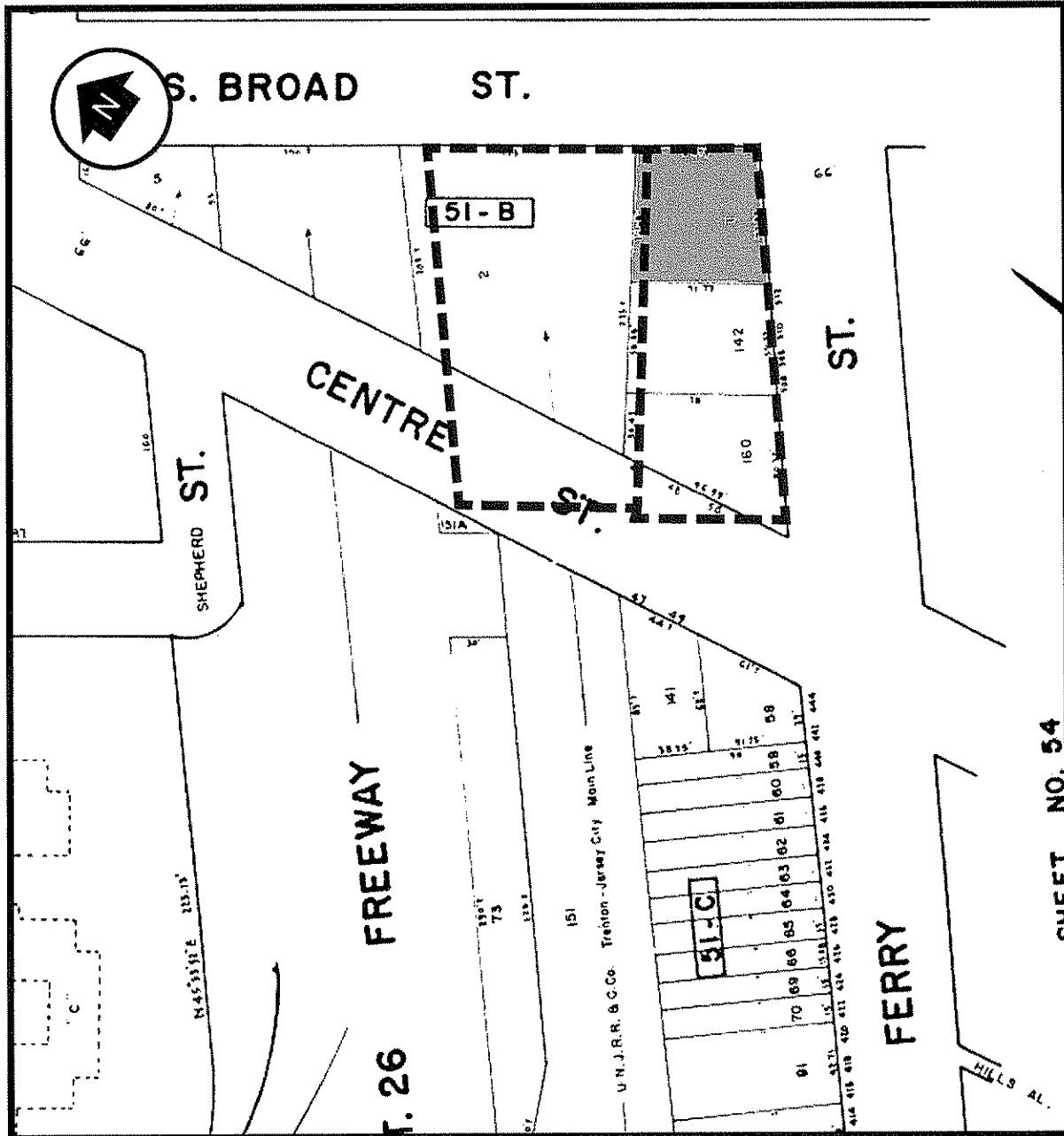


Figure A.13. Map showing the limits of the Elijah's Brown's adjoining tracts in 1834. The lot to the north, comprising Lots 32 and 33 in Robert Lettis Hooper's planned subdivision of Kingsbury, was previously owned by the potter, James Rhodes, and his heirs, from 1778 until 1787. The neighboring lot to the south, on which the Eagle Tavern is situated, was referred to as Lot 34 in Kingsbury. Scale: 1 inch= 110 feet (approximately). Location of present-day Eagle Tavern lot shaded.

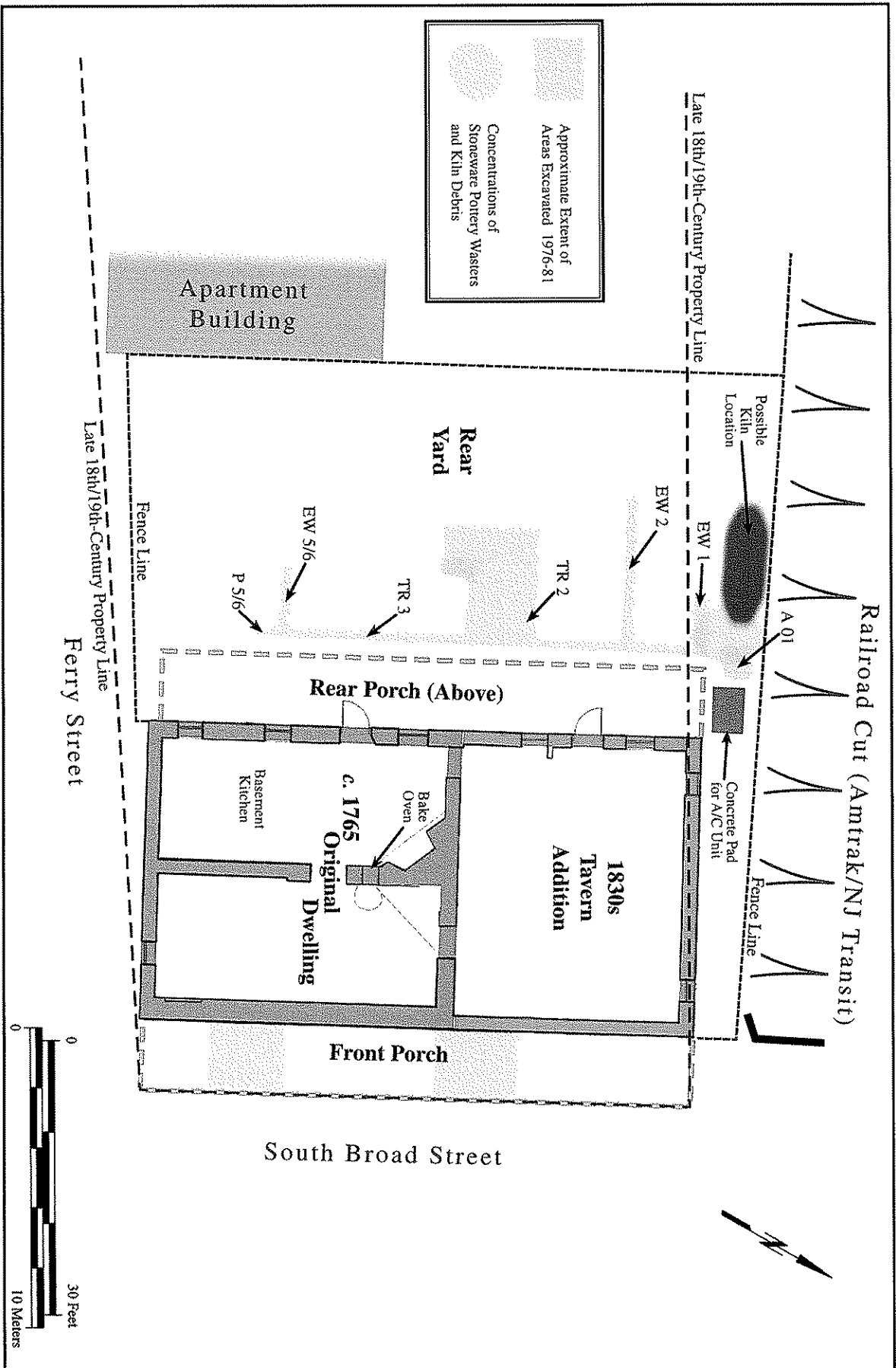


Figure A. 14. Site plan of the Eagle Tavern property showing the approximate extent of areas excavated 1976-81.